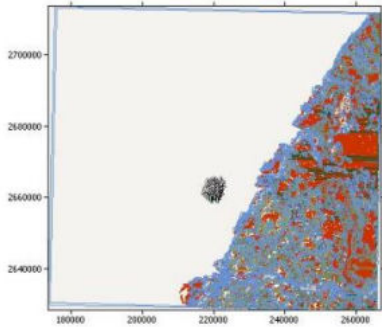


WAsP 風場風能發電量分析

福海二期年發電量預估 (Siemens SWT-4.0-120)



Summary results

Parameter	Total	Average	Minimum	Maximum
Net AEP [GWh]	529.219	18.901	18.376	19.694
Gross AEP [GWh]	562.406	20.086	20.078	20.093
Wake loss [%]	5.9	-	-	-

Site results

Site	Location [m]	Turbine	Elevation [m] a.s.l.	Height [m] a.g.l.	Net AEP [GWh]	Wake loss [%]
F01	(222430.0,2662199.0)	SWT-4.0-120 V3 - HWRT	0.1	90	19.694	1.96
F02	(221970, 2661520)	SWT-4.0-120 V3 - HWRT	0.1	90	19.055	5.13
F03	(221075, 2661954)	SWT-4.0-120 V3 - HWRT	0.1	90	19.316	3.86
F04	(220631, 2662339)	SWT-4.0-120 V3 - HWRT	0.1	90	19.299	3.95
F05	(221950, 2660123)	SWT-4.0-120 V3 - HWRT	0.1	90	19.595	2.4
F06	(221505, 2660507)	SWT-4.0-120 V3 - HWRT	0.1	90	18.990	5.45
F07	(221061, 2660892)	SWT-4.0-120 V3 - HWRT	0.1	90	19.107	4.87
F08	(220615, 2661277)	SWT-4.0-120 V3 - HWRT	0.1	90	18.620	7.32
F09	(220171, 2661662)	SWT-4.0-120 V3 - HWRT	0.1	90	18.718	6.82
F10	(219725, 2662046)	SWT-4.0-120 V3 - HWRT	0.1	90	19.303	3.93
F11	(221490, 2659445)	SWT-4.0-120 V3 - HWRT	0.1	90	18.948	5.64
F12	(221045, 2659829)	SWT-4.0-120 V3 - HWRT	0.1	90	18.664	7.07
F13	(220600, 2660215)	SWT-4.0-120 V3 - HWRT	0.1	90	18.554	7.63
F14	(220155, 2660599)	SWT-4.0-120 V3 - HWRT	0.1	90	18.376	8.52
F15	(219710, 2660984)	SWT-4.0-120 V3 - HWRT	0.1	90	18.487	7.96
F16	(219266, 2661368)	SWT-4.0-120 V3 - HWRT	0.1	90	18.779	6.5
F17	(218821, 2661753)	SWT-4.0-120 V3 - HWRT	0.1	90	19.421	3.32
F18	(221030, 2658768)	SWT-4.0-120 V3 - HWRT	0.1	90	18.929	5.72
F19	(220585, 2659152)	SWT-4.0-120 V3 - HWRT	0.1	90	18.858	6.1
F20	(220140, 2659536)	SWT-4.0-120 V3 - HWRT	0.1	90	18.621	7.28
F21	(219696, 2659921)	SWT-4.0-120 V3 - HWRT	0.1	90	18.391	8.42
F22	(219250, 2660305)	SWT-4.0-120 V3 - HWRT	0.1	90	18.418	8.32
F23	(218361, 2661074)	SWT-4.0-120 V3 - HWRT	0.1	90	19.195	4.45
F24	(218806, 2660690)	SWT-4.0-120 V3 - HWRT	0.1	90	18.660	7.12
F25	(219680, 2658857)	SWT-4.0-120 V3 - HWRT	0.1	90	18.766	6.55
F26	(219235, 2659242)	SWT-4.0-120 V3 - HWRT	0.1	90	18.749	6.65
F27	(218791, 2659626)	SWT-4.0-120 V3 - HWRT	0.1	90	18.778	6.53
F28	(218345, 2660012)	SWT-4.0-120 V3 - HWRT	0.1	90	18.929	5.74