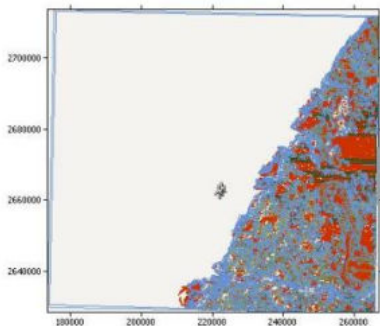


# WAsP 風場風能發電量分析

福海一期年發電量預估 (Siemens SWT-4.0-120)



## Summary results

Parameter	Total	Average	Minimum	Maximum
Net AEP [GWh]	39.906	19.953	19.905	20.001
Gross AEP [GWh]	40.152	20.076	20.075	20.077
Wake loss [%]	0.61	-	-	-

## Site results

Site	Location [m]	Turbine	Elevation [m] a.s.l.	Height [m] a.g.l.	Net AEP [GWh]	Wake loss [%]
COPP 001	(223099, 2661475)	SWT-4.0-120 V3 - HWRT	0.1	90	20.001	0.37
COPP 002	(222326, 2660725)	SWT-4.0-120 V3 - HWRT	0.1	90	19.905	0.86