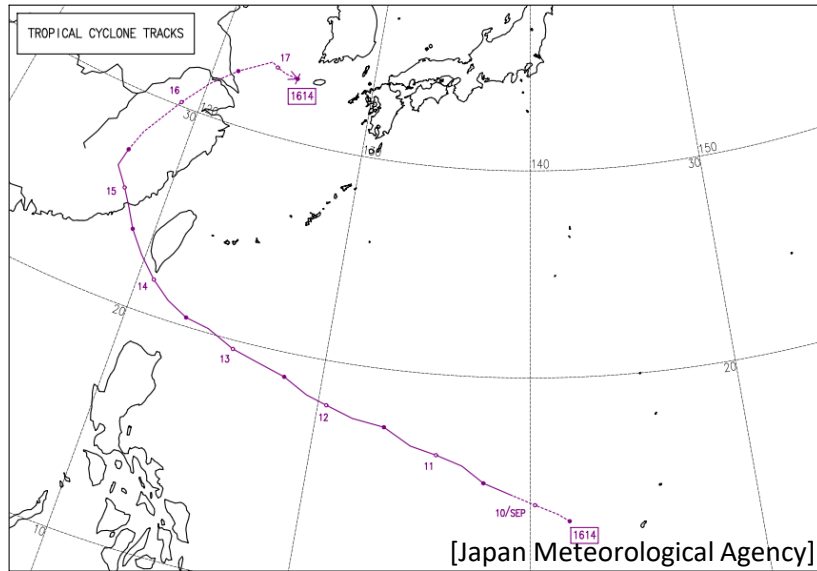
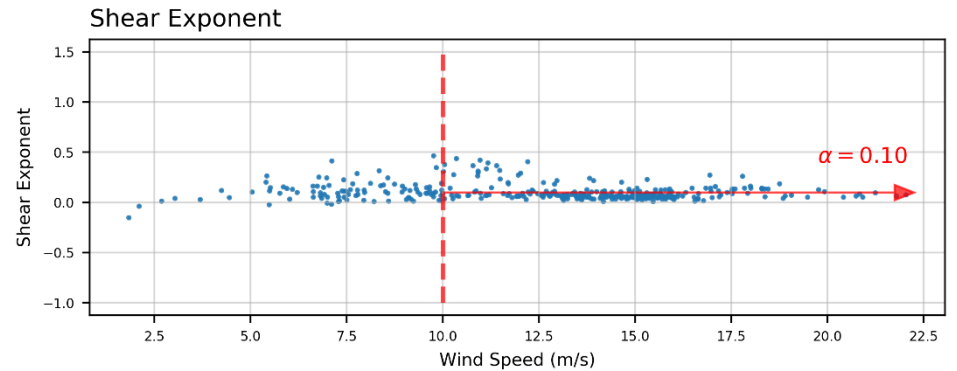
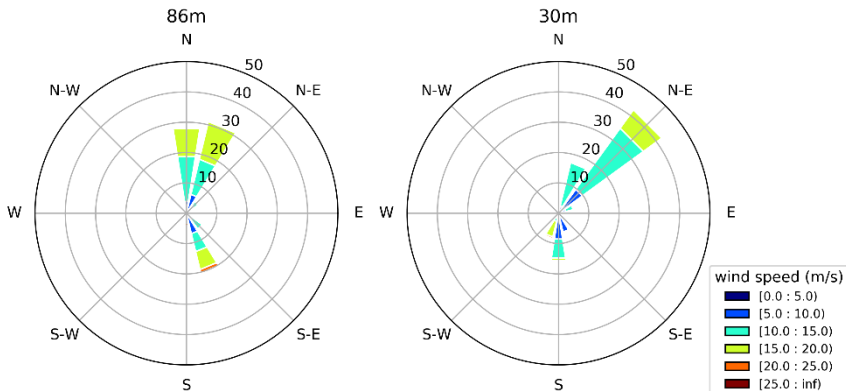
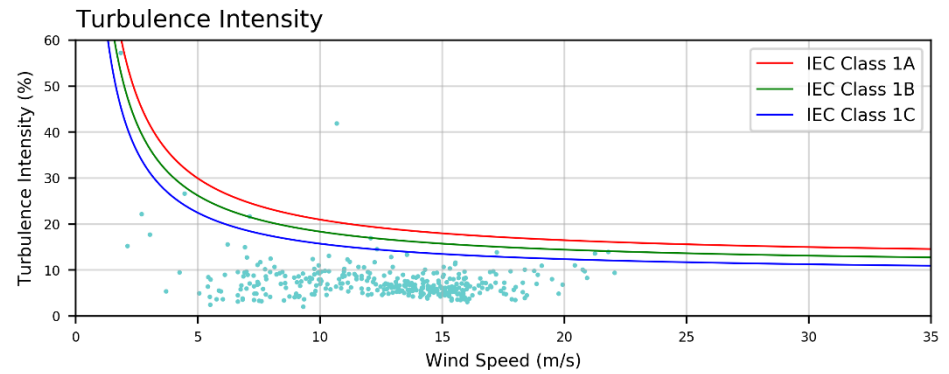
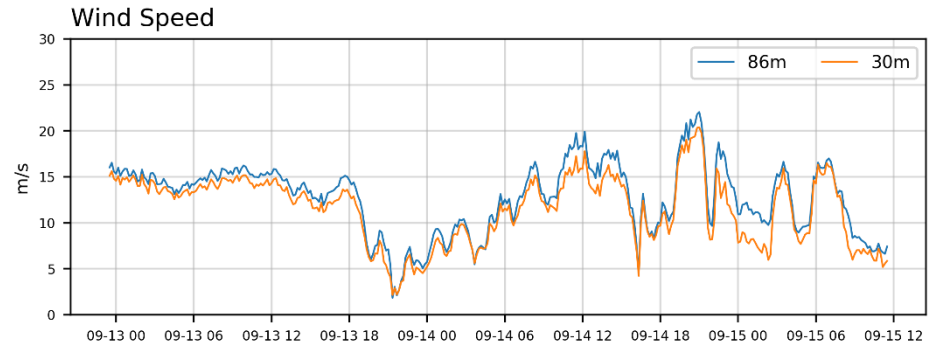


Typhoon Meranti (2016)

As observed at the Fuhai Offshore Met Mast



Alarm Duration: 2016-09-12 23:30 - 2016-09-15 11:30
 Intensity: Intense
 Max. Wind Speed: 60 m/s
 Lowest Atm. Pressure: 900 hPa [Info from CWB]



Wind data observed at 86m and 30m heights. Atm. Pressure measured at 20m height.